



# MC-Fix-ST

## Ready to Use Quick Setting Plug for Leakages

### Product Properties

- Quick water sealing material
- Polymer modified ready to use
- Sets hydraulically without shrinkage
- Chloride free and does not saponify over a period of time
- Not sensitive to frost

### Areas of Application

- Can be employed everywhere, where a quick and reliable sealing is necessary even against water pressure
- **MC-Fix-ST** is indispensable while carrying out waterproofing jobs, especially where continuous seepage of water hampers application of waterproofing treatments
- Suitable where very dry surfaces are required, e.g. In basements, wet areas, masonry walls, water towers, etc.

### Application Notes

#### General

**MC-Fix ST** is a single component, quick water sealing material for the repair of leaks, water seepage in cellars, shafts, tunnels, basements etc.

**MC-Fix-ST** is a polymer modified ready to use mortar for quick and reliable sealing and plugging of leaks. Only water is to be added at the site to get the plugging mortar. The mortar plug develops very high strength and is stone hard within about 60 – 90 seconds. The waterproofing and bonding properties are excellent and the sealing is permanent.

**MC-Fix-ST** sets hydraulically without shrinkage. The mortar is chloride free and does not saponify over a period of time. In case of larger leaks, it is advisable to start plugging at the top point of leakage and work downwards.

#### Advantages

**MC-Fix-ST** sets hydraulically without shrinkage. Also, it is not sensitive to frost action and has a permanent sealing action.

**MC-Fix ST** is normally used where there is continuous seepage of water is observed and any other waterproofing treatment is redundant in that case.

#### Instruction to use

The application is simple. First chisel the crack or leakage spots to prepare them in dovetail fashion, so that perfect bond can be guaranteed when the water pressure acts in reverse direction.

Remove loose particles and dust. Mix **MC-Fix-ST** in small amounts with water, knead it into a thixotropic hard mortar consistency form and press it in to a plug shaped mass. Hold it immediately against water leak in the prepared joint and press until the plug sets (about 60 – 90 sec). Setting time can be accelerated using hot water.

In cases of larger leaks, which require more than one plug, it is recommended to commence plugging at the top of the leak aperture and work downwards until completion

**MC-Fix-ST** can be applied in Horizontal and Vertical application. Care should be taken that all the mixed materials should be applied in single go. Which will provide better performance of this product.

If prepared **MC-Fix-ST** shows signs of hardening before plugging, it must not be considered for further use. Addition of water in this case is not permissible.

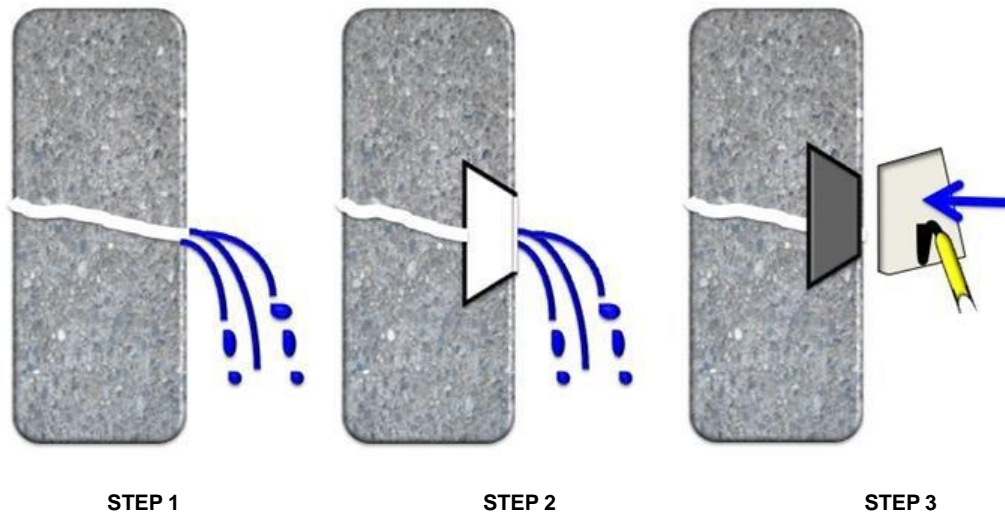
If temperatures, while preparing **MC-Fix-ST** fall below +8°C it is advisable to add warm water.

#### Cleaning

**MC-Fix-ST** is a mineral based product; hence all the tools can be cleaned by water before it sets completely. Once **MC-Fix-ST** sets, then only it can be removed by mechanical mean.

### Further Instructions / Precautions

#### Application of MC-Fix-ST



**Step 1: Identify Leakage Spots**

**Step 2: Cut a dovetail joint into the leak to Guarantee perfect bond of MC-Fix-ST to Substrate**

**Step 3: Make a plug of MC-Fix-ST and water and fill the dovetail joint to permanently plug leakage**

#### Technical Data for MC-Fix-ST

Characteristic	Unit	Value*	Comments
Pot Life	seconds	60 - 90	Hardens on mixing at 30 °C
Mixing Ratio	%	25	Or as per Consistency required

#### Product Characteristics for MC-Fix-ST

<b>Type of Product</b>	Ready to use quick setting plug for leakages
<b>Form</b>	Powder
<b>Colour</b>	Grey powder
<b>Shelf Life</b>	6 months from date of Manufacture
<b>Delivery</b>	30 Kg Sacks
<b>Storage</b>	In Unopened Packaging. Protect from Rain, Direct Sunlight, Heat and Frost
<b>Disposal</b>	Empty packs completely and dispose off carefully to protect our Environment

#### Safety Advice

Please Take notice of the safety information and advice given on the packaging labels, safety information sheets and General Application Advice.

**Note:** - The information on this Data Sheet is based on our experiences and correct to the best of our knowledge. It is However, not binding. It has to be adjusted to the individual structure, application purpose and especially to local conditions. Our Data refers to the accepted engineering rules, which have to be observed during application. This provided we are liable for the correctness of this data within the scope of our terms and conditions of sale-delivery-and-service. Recommendations of our employees which differ from the data contained in our information sheets are binding if given in written form. The accepted engineering rules must be observed at all times.

**Edition:** - MC/IND/190204, Some Technical Changes have been made to this print medium. Older editions are invalid and may not be used anymore. If a technically revised new edition is issued, this edition becomes invalid.